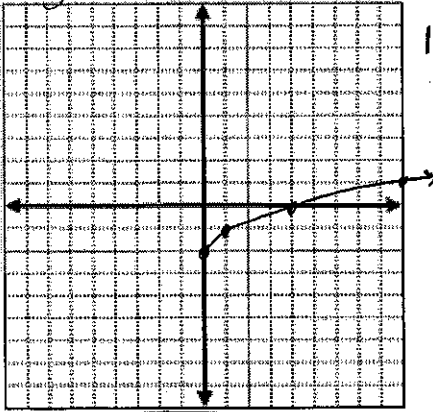


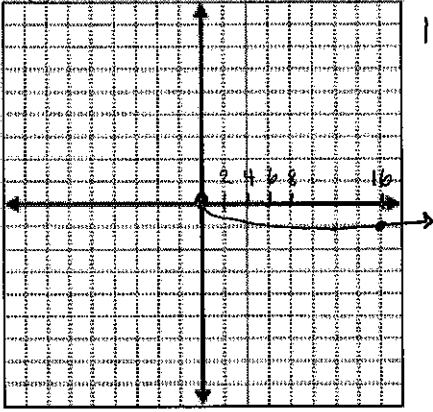
2.

$$y = \sqrt{x} - 2$$



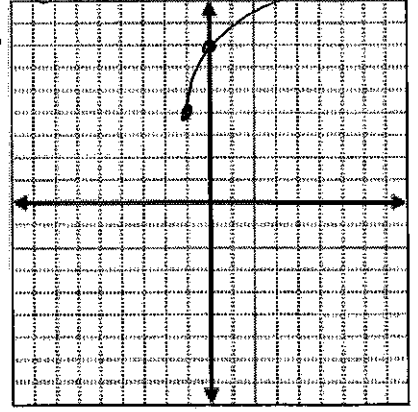
10.

$$y = -\frac{1}{4}\sqrt{x}$$



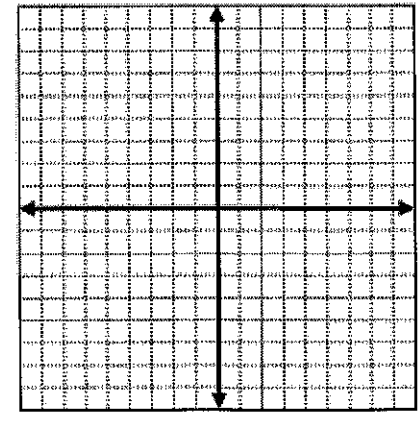
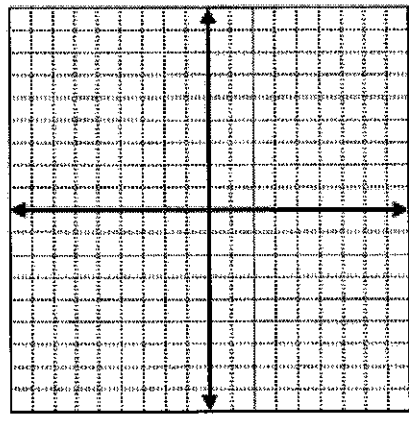
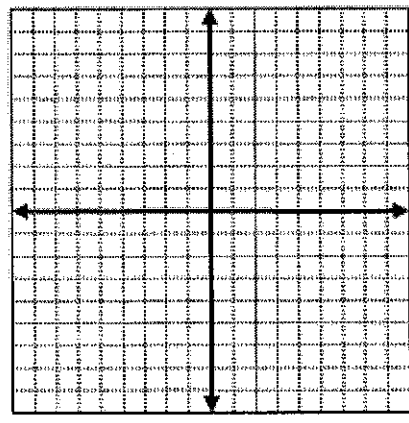
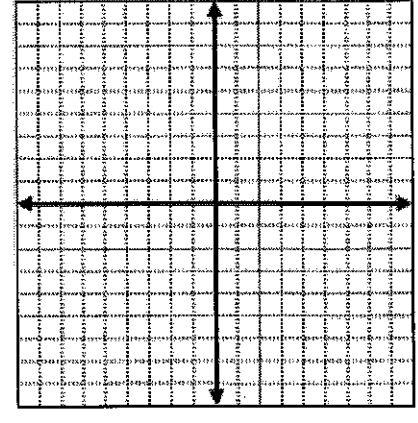
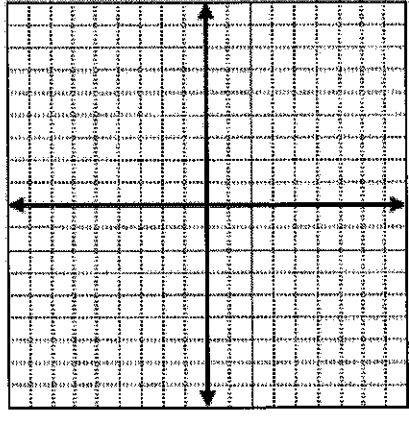
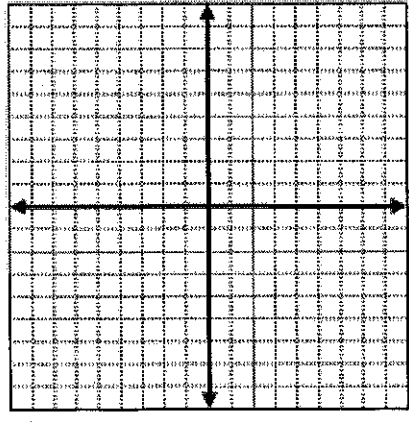
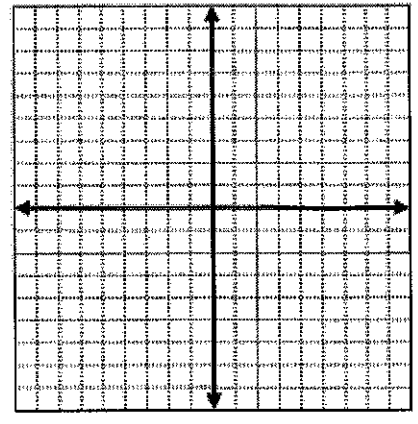
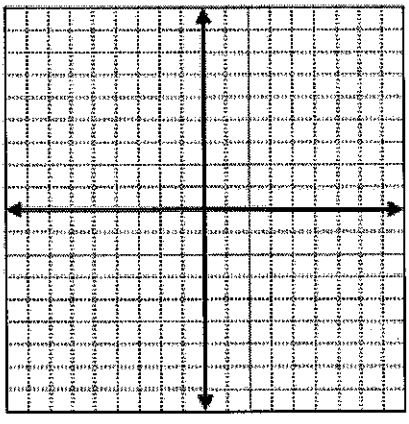
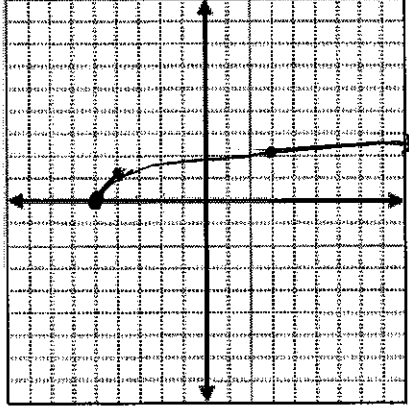
18.

$$y = 3\sqrt{x+1} + 4$$



24.

$$y = \sqrt[3]{x+5}$$



pg. 411 # 2-34 even NO GC

2. graph paper

10. graph paper

18. graph paper

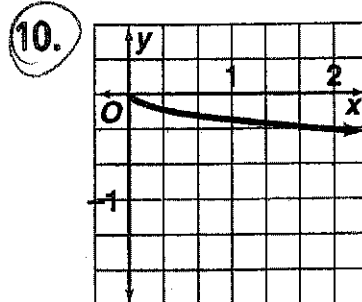
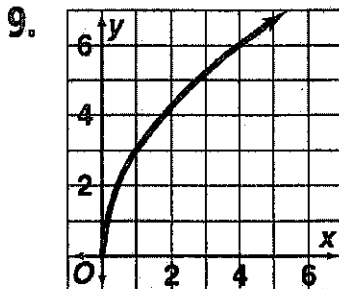
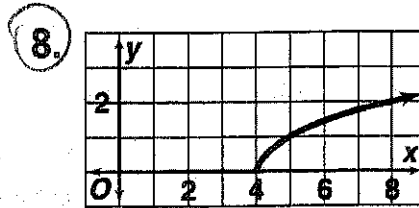
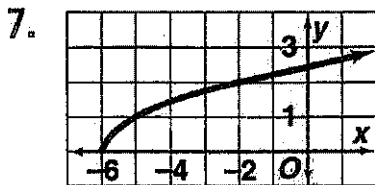
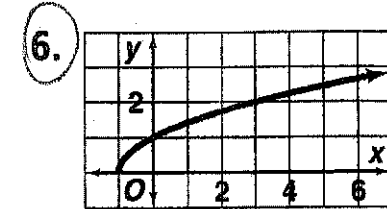
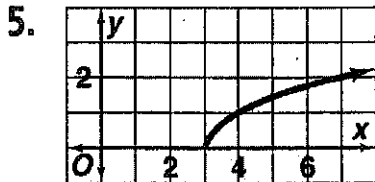
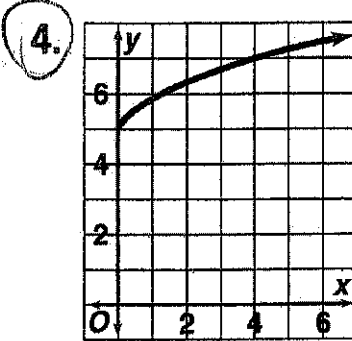
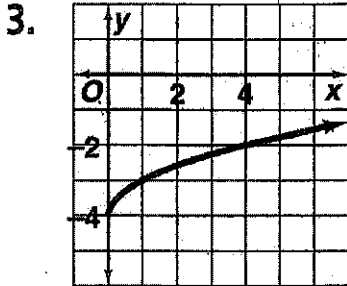
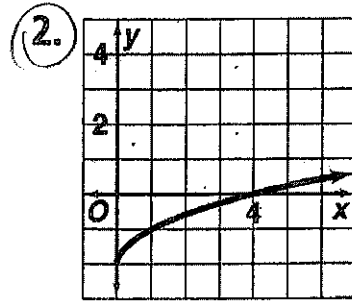
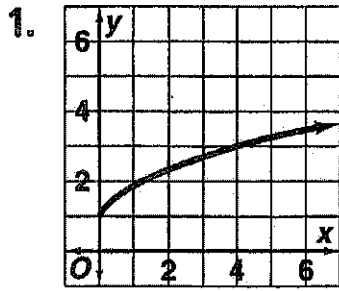
24. graph paper

30.  $y = \sqrt{9x-9}$

$$y = \sqrt{9(x-1)}$$

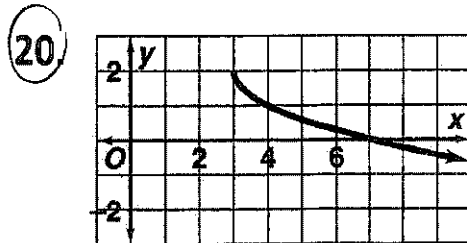
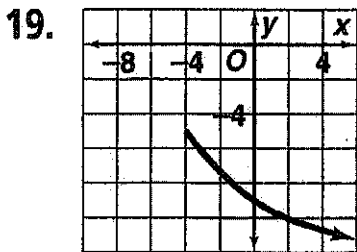
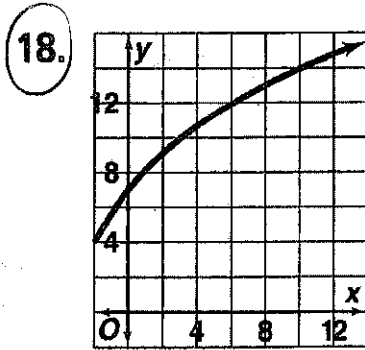
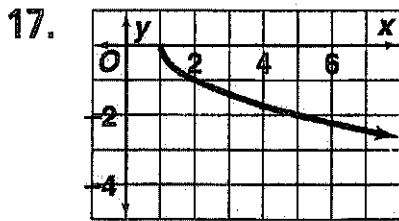
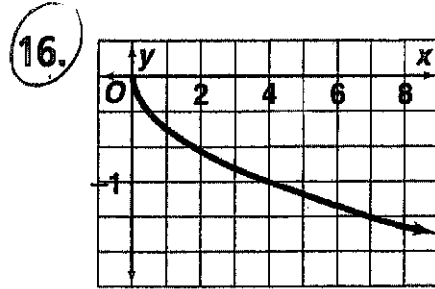
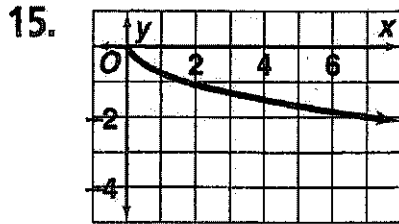
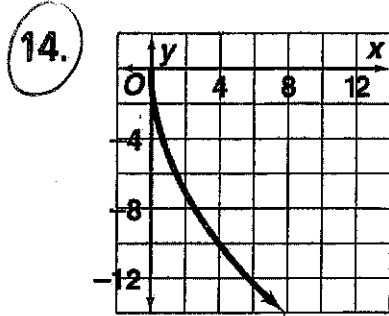
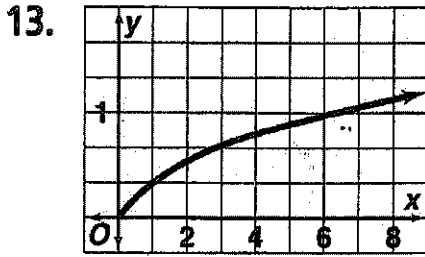
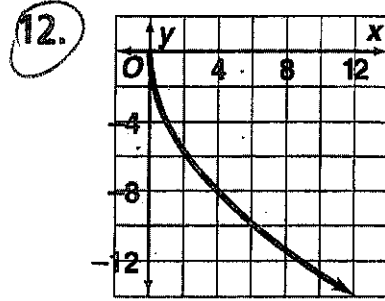
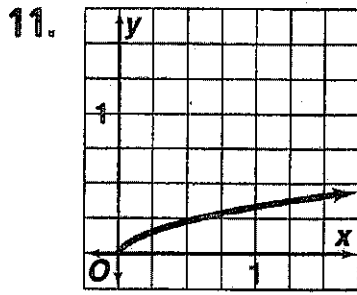
$$y = 3\sqrt{x-1}$$

Answers for Lesson 7-8, pp. 411–413 Exercises

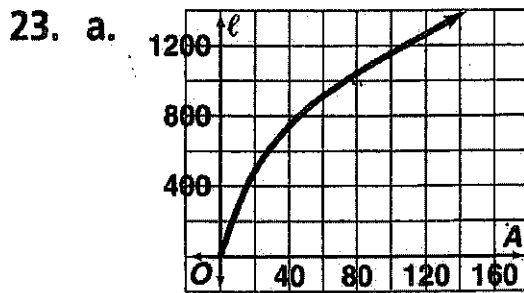
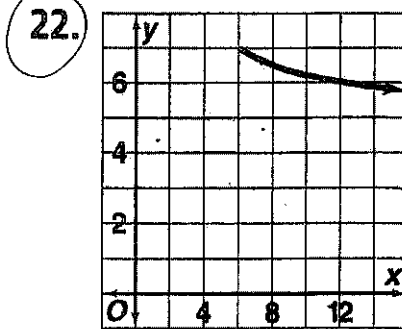
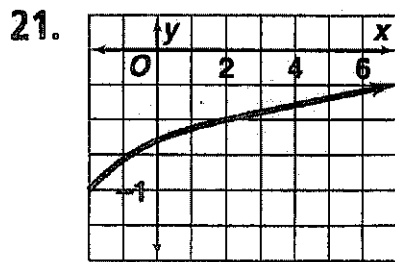


© Pearson Education, Inc. All rights reserved.

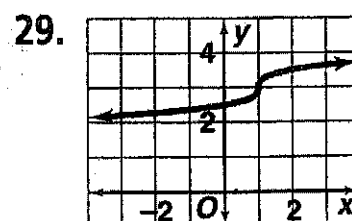
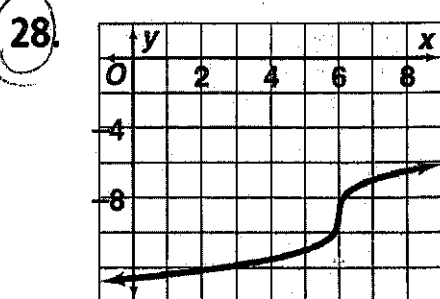
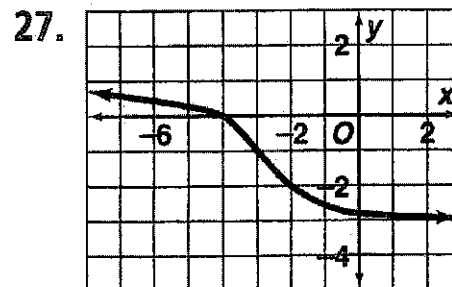
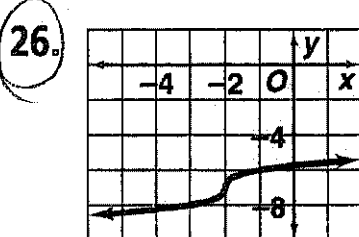
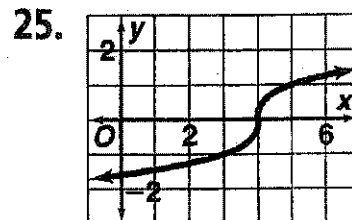
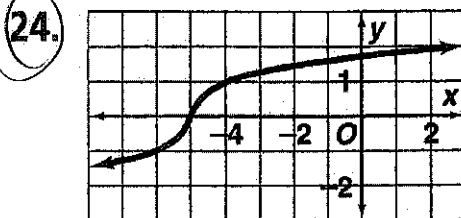
Answers for Lesson 7-8, pp. 411-413 Exercises (cont.)



© Pearson Education, Inc. All rights reserved.



b.  $\approx 745$  ft,  $\approx 1053$  ft,  $\approx 1343$  ft



**Answers for Lesson 7-8, pp. 411–413 Exercises (cont.)**

30.  $y = 3\sqrt{x - 1}$ ; the graph is the graph of  $y = 3\sqrt{x}$  translated 1 unit to the right.

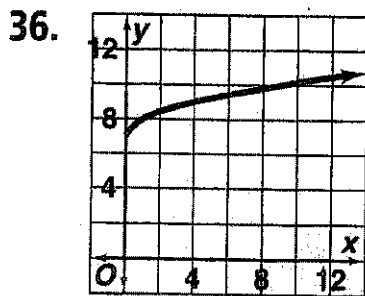
31.  $y = -4\sqrt{x + 2}$ ; the graph is the graph of  $y = -4\sqrt{x}$  translated 2 units to the left.

32.  $y = -14\sqrt{x + 1}$ ; the graph is the graph of  $y = -14\sqrt{x}$  translated 1 unit to the left.

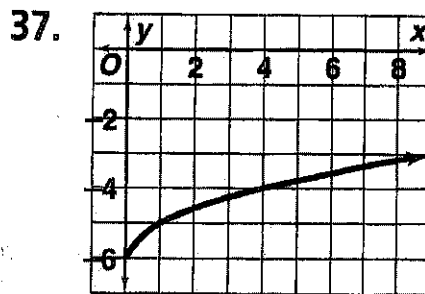
33.  $y = 4\sqrt[3]{x + 2}$ ; the graph is the graph of  $y = 4\sqrt[3]{x}$  translated 2 units to the left.

34.  $y = 8\sqrt{x - 2} - 3$ ; the graph is the graph of  $y = 8\sqrt{x}$  translated 2 units to the right and 3 units down.

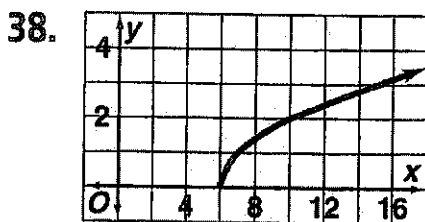
35.  $y = 3\sqrt[3]{x - 2} + 1$ ; the graph is the graph of  $y = 3\sqrt[3]{x}$  translated 2 units to the right and 1 unit up.



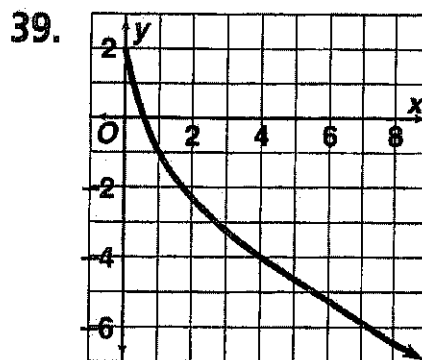
D:  $x \geq 0$ , R:  $y \geq 7$



D:  $x \geq 0$ , R:  $y \geq -6$



D:  $x \geq 6$ , R:  $y \geq 0$



D:  $x \geq 0$ , R:  $y \leq 2$