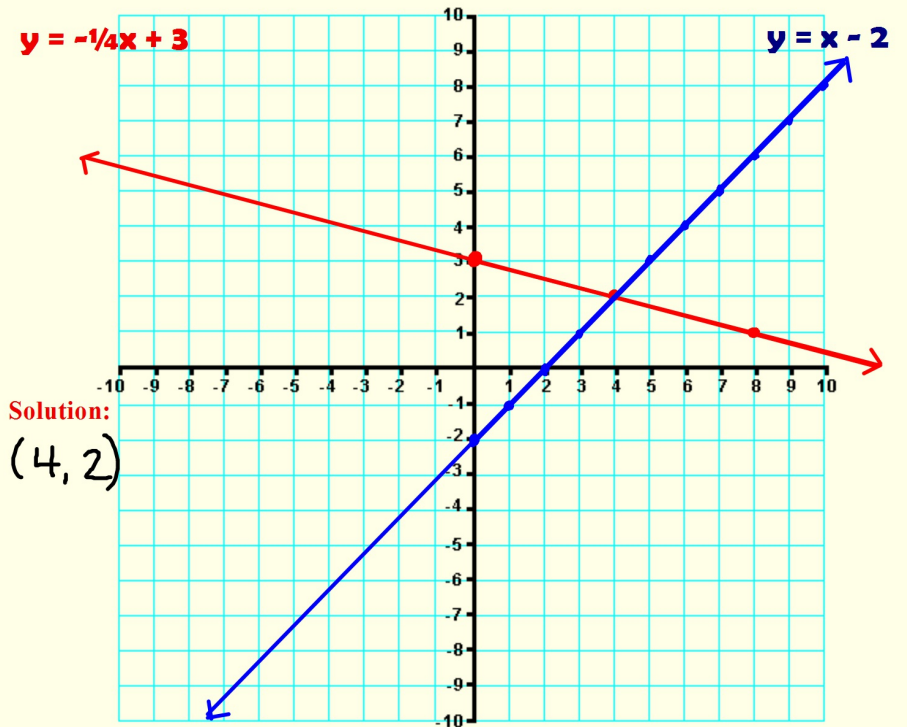


7.1 Solving Systems of Equations by Graphing

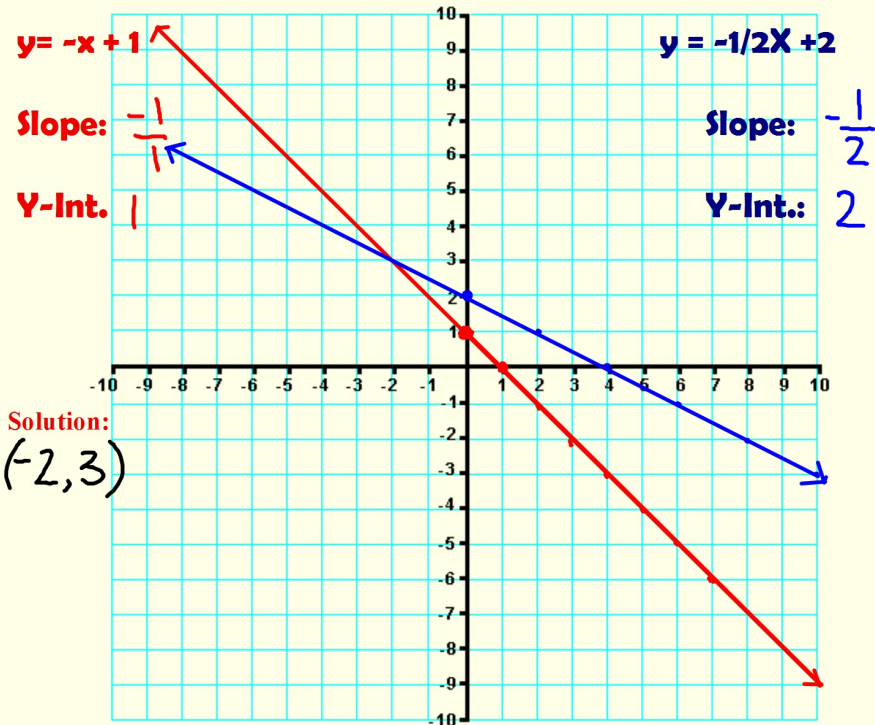
Two or more linear equations form a

A solution of the system is the ordered pair that makes both equations true.

To check if a point is a solution, plug it into both equations and evaluate to see if both equations are true. This tip will be very important when you get to multiple choice tests in your future!

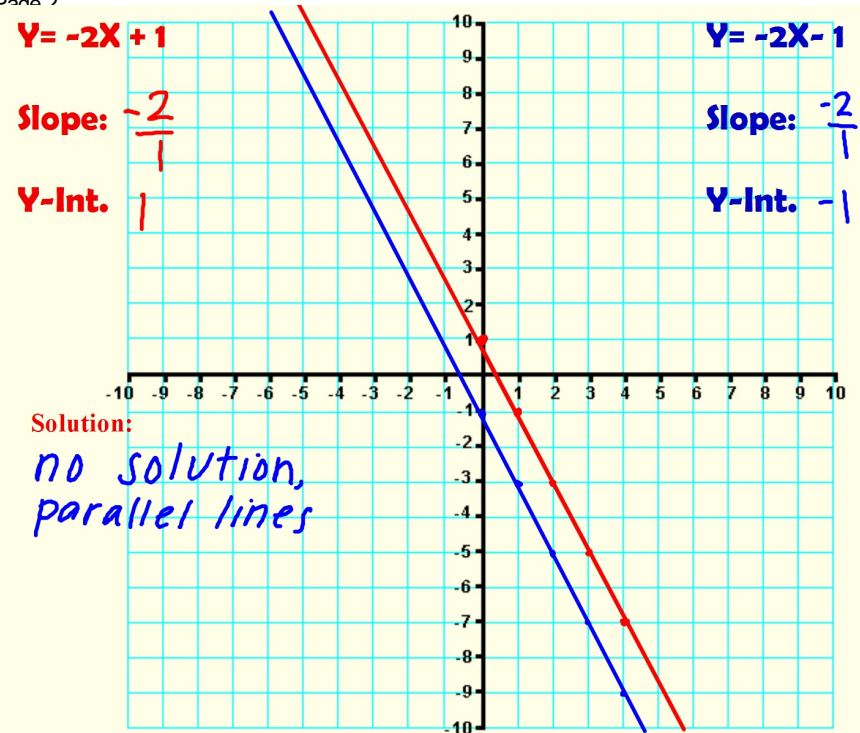


Page 1



Page 3

Page 2



Page 4

$$2x + 4y = 8$$

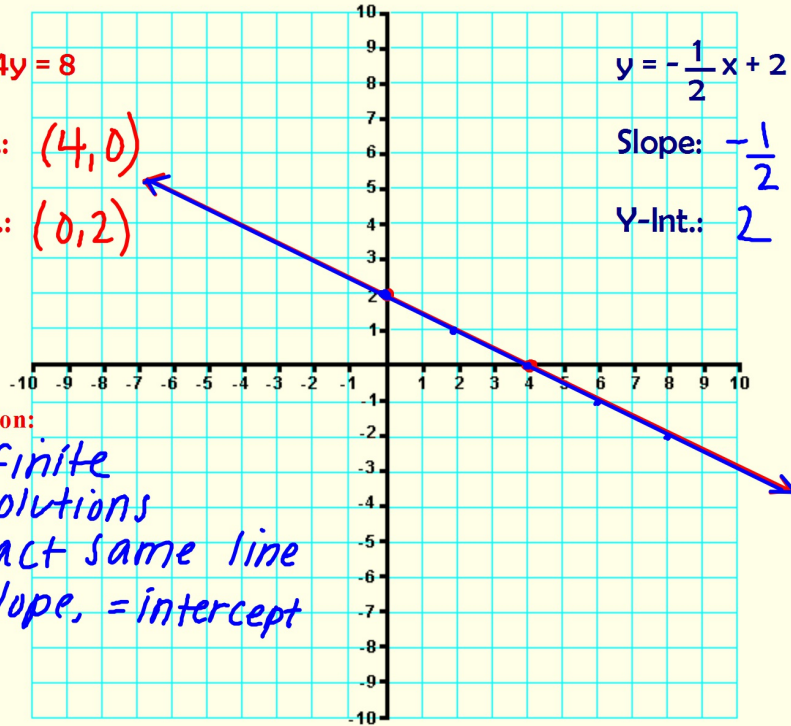
x-int.: $(4, 0)$

y-int.: $(0, 2)$

$$y = -\frac{1}{2}x + 2$$

Slope: $-\frac{1}{2}$

Y-Int.: 2



Solution:

infinite
solutions
exact same line
= slope, = intercept

Homework
page 343 #2-22 even