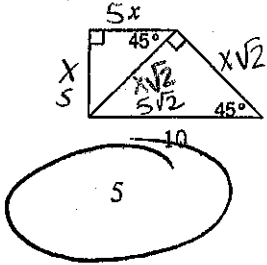


Multi-Step Special Right Triangles

Find the missing side lengths. Leave your answers as radicals in simplest form.

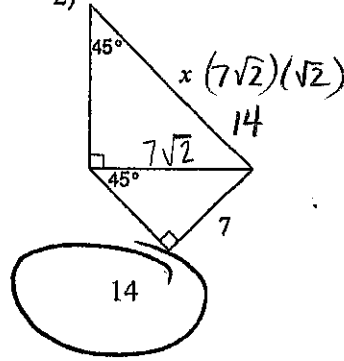
1)



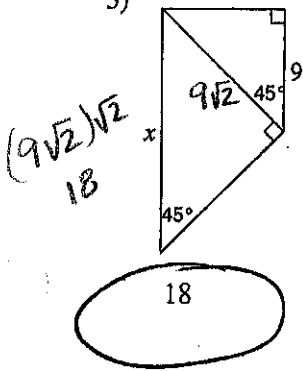
$$\frac{10}{2} = \frac{2(x\sqrt{2})}{2}$$

$$\frac{5}{\sqrt{2}} = \frac{x\sqrt{2}}{\sqrt{2}}$$

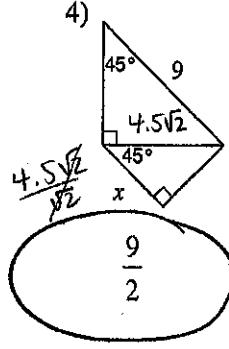
2)



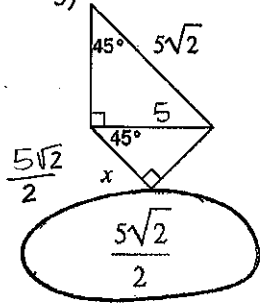
3)



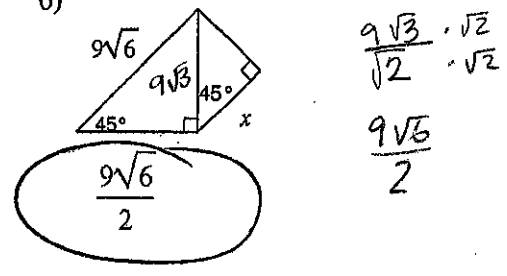
4)



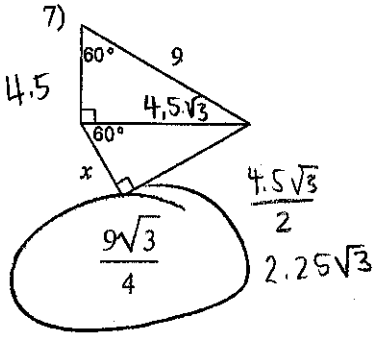
5)



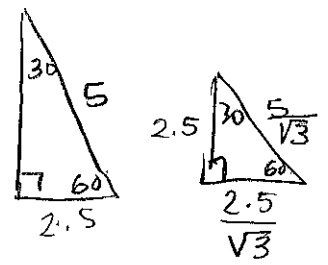
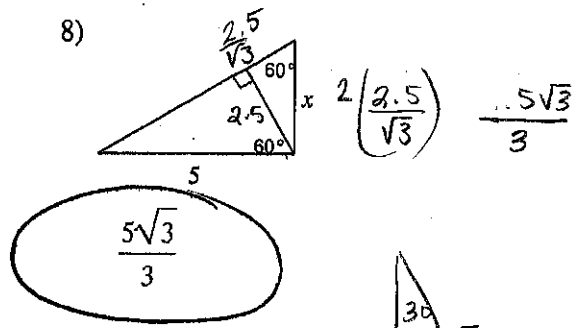
6)



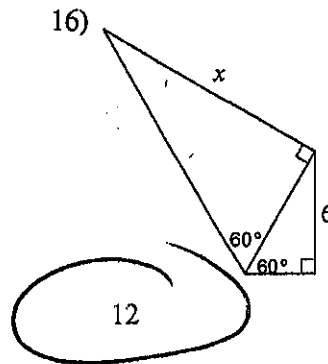
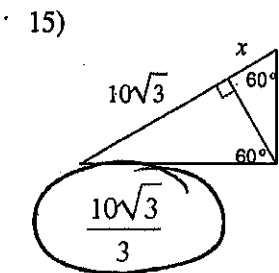
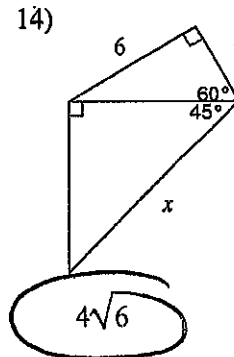
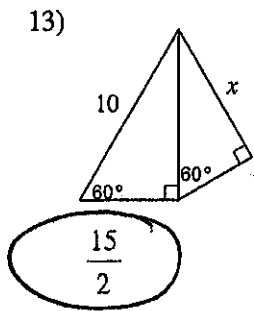
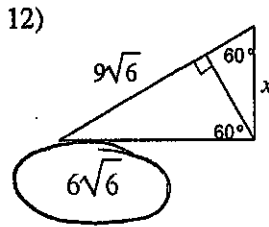
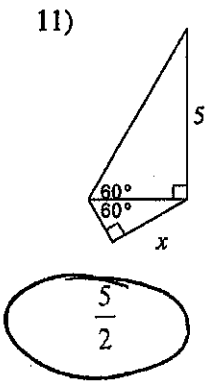
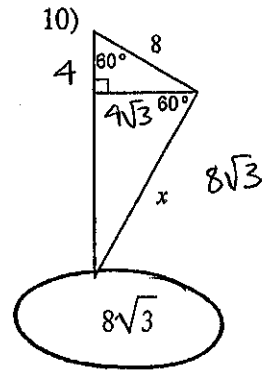
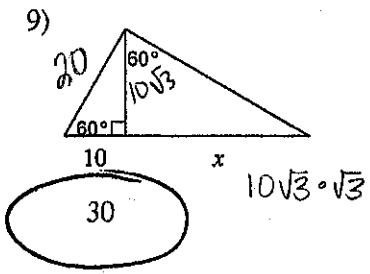
7)



8)



Key



129