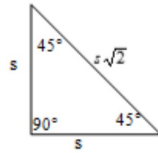


45° - 45° - 90° TRIANGLE

In a 45° - 45° - 90° triangle, both legs are congruent and the Length of the hypotenuse is $\sqrt{2}$ times the length of a leg.

Hypotenuse = $\sqrt{2}$ (side length)

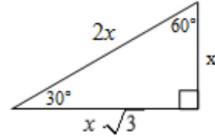


30° - 60° - 90° TRIANGLE

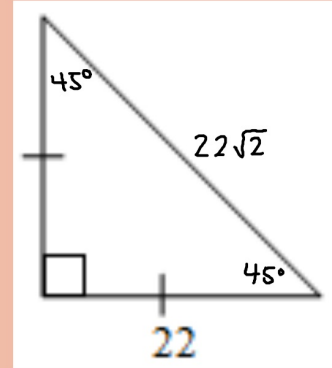
In a 30° - 60° - 90° triangle, the length of the hypotenuse is twice the length of the shorter leg. The length of the longer leg $\sqrt{3}$ is times the length of the shorter leg.

Hypotenuse = 2 (short side)

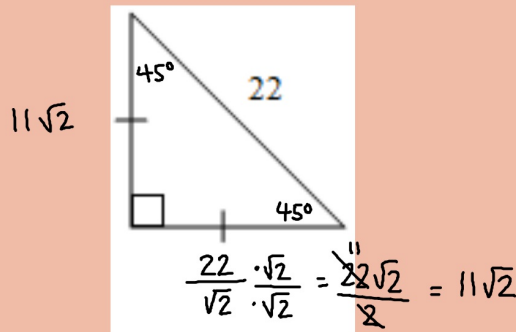
Longer Leg = $\sqrt{3}$ (short side)



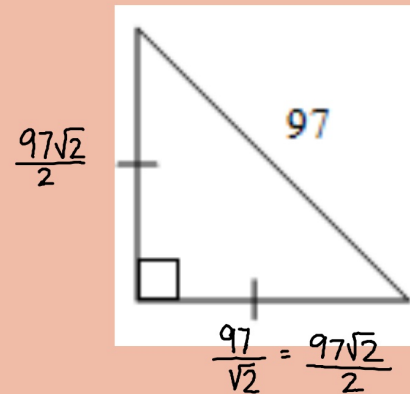
Find the lengths of the missing sides.



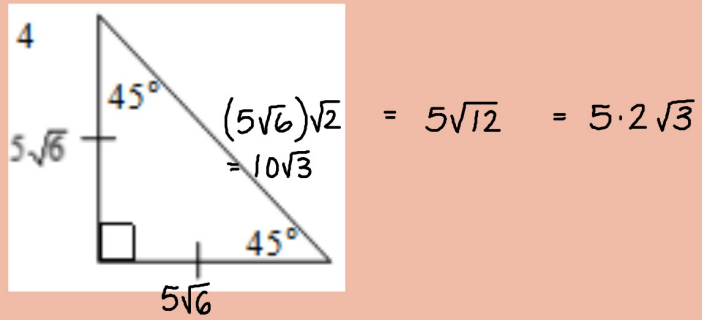
Find the lengths of the missing sides.



Find the lengths of the missing sides.

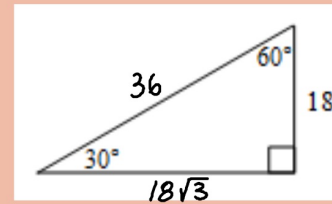


Find the lengths of the missing sides.



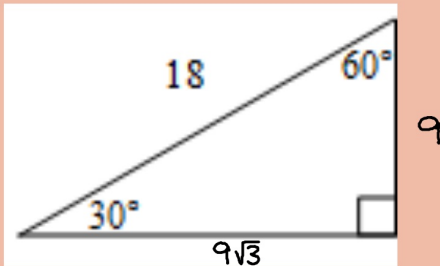
Page 5

Find the lengths of the missing sides.



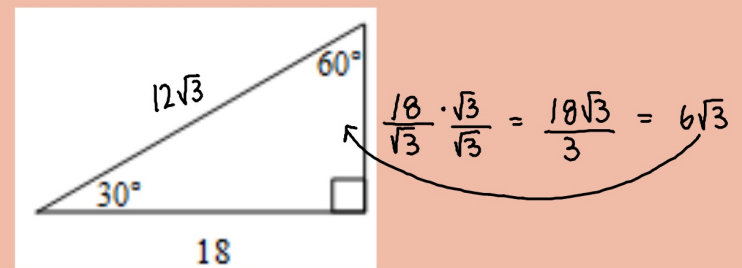
Page 6

Find the lengths of the missing sides.



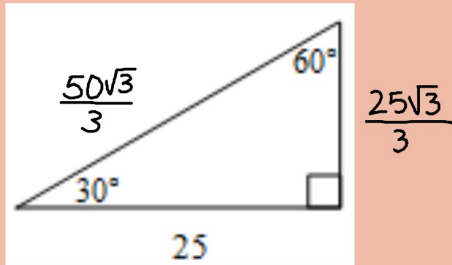
Page 7

Find the lengths of the missing sides.

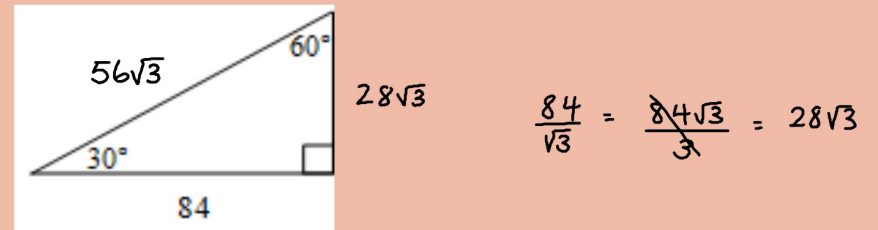


Page 8

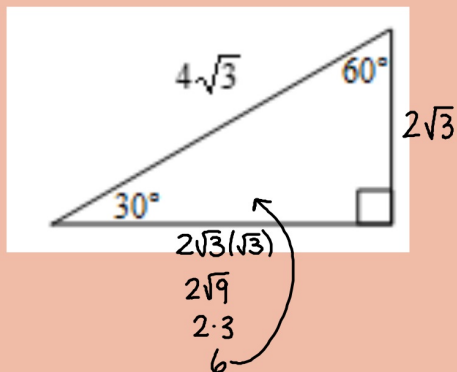
Find the lengths of the missing sides.



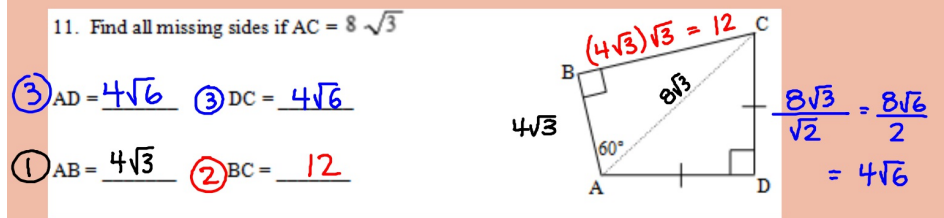
Find the lengths of the missing sides.



Find the lengths of the missing sides.



Find the lengths of the missing sides.



homework:

page 703 # 1-13

WS Multi-step Special Right Triangles