

Polynomial Functions
Writing Equations from the Graph

Name _____

Crossing zeros at _____

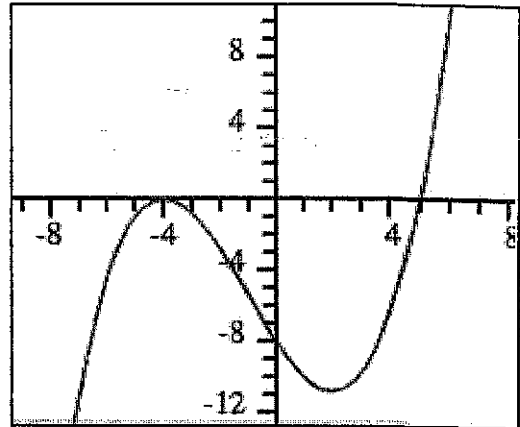
Touching zeros at _____

Degree _____

Equation: $f(x) = a (\quad) (\quad)$

y-intercept (0, -8)

Solve for a



Use a standard window.

Equation in factored form with the value for a:

y =

Check your answer with the calculator.

Crossing zeros at _____

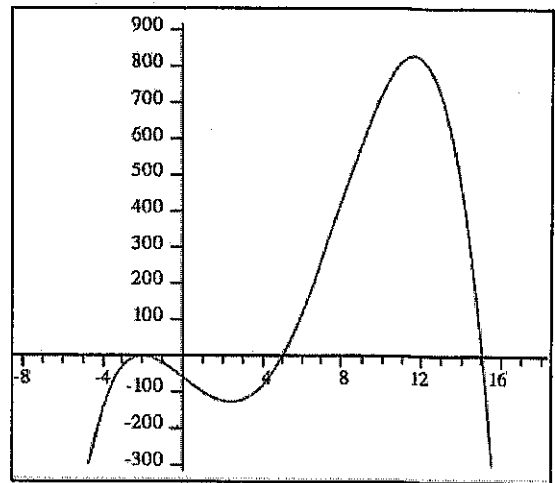
Touching zeros at _____

Degree _____

Equation: $f(x) = a (\quad) (\quad) (\quad)$

y-intercept (0, -60)

Solve for a



xmin = -10
xmax = 25
xscl = 5
ymin = -300
ymax = 900
yscl = 100

Equation in factored form with the value for a:

y =

Check your answer with the calculator.

Crossing zeros at _____

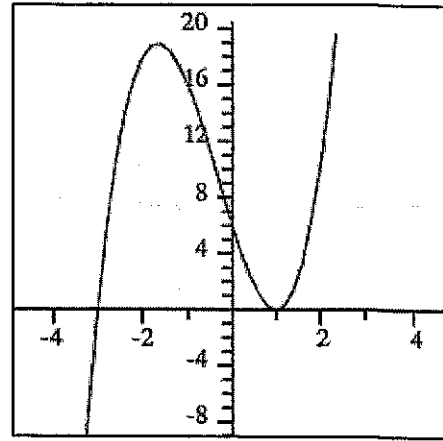
Touching zeros at _____

Degree _____

Equation: $f(x) = a (\quad) (\quad)$

y-intercept (0, 6)

Solve for a



Equation in factored form with the value for a:

y =

Check your answer with the calculator.

xmin = -10
xmax = 10
xscl = 1
ymin = -10
ymax = 20
yscl = 1

Crossing zeros at _____

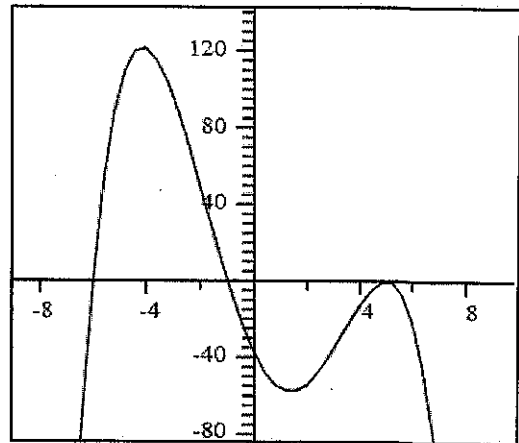
Touching zeros at _____

Degree _____

Equation: $f(x) = a (\quad) (\quad)$

y-intercept (0, -37.5)

Solve for a



Equation in factored form with the value for a:

y =

Check your answer with the calculator.

xmin = -10
xmax = 10
xscl = 1
ymin = -80
ymax = 130
yscl = 20